

GJSM JET PUMP

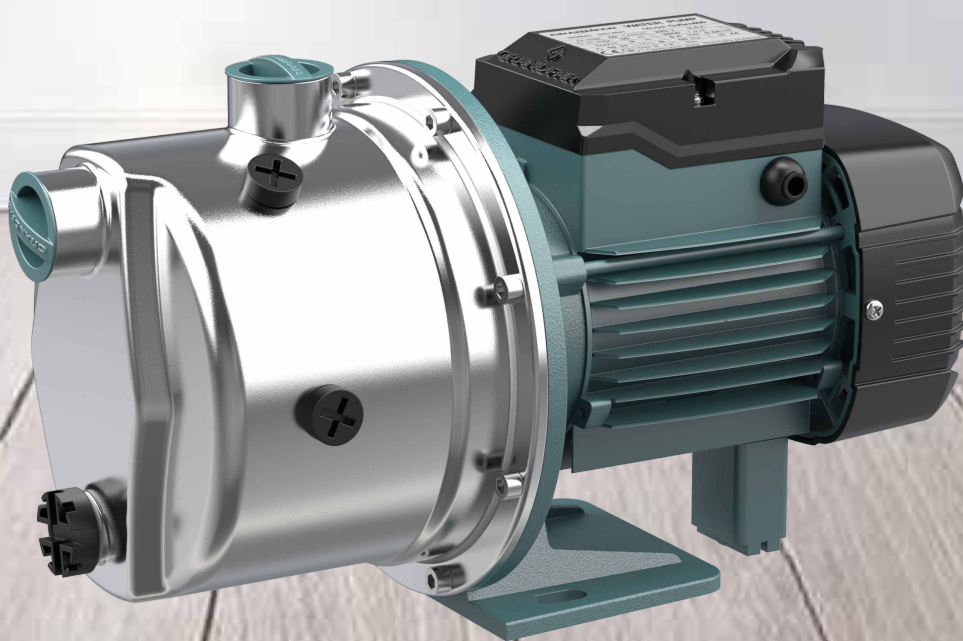
*Cast iron electrophoresis for rust prevention.
Pollution-free water ,Ensure water safety*



55_m



4 m³/h



GJSm VERSION K1 **JET PUMP**

ZHEJIANG GRANDFAR PUMP INDUSTRY CO.,LTD
E-MAIL:INFO@GRANDFARGROUP.COM



**Product
Info**



JET PUMP

PRODUCT SERIES



DOMESTIC WATER



DEEP WELL WATER INTAKE



GARDEN IRRIGATION

GJSm

JET PUMP

They are recommended for pumping clean water without abrasive particles, and liquids that are chemically non aggressive for the materials of which the pump is made.



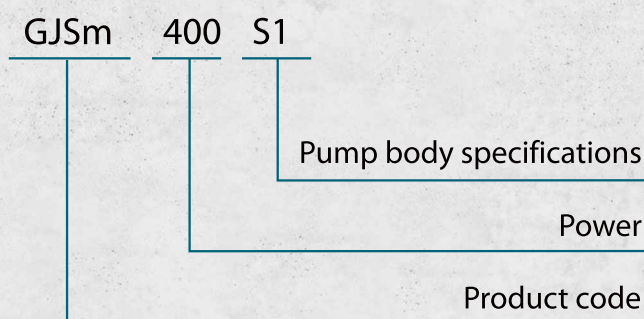
VERSION K1

JET PUMP

As a result of their reliability and the fact that they are easy to use, these pumps are widely used in the domestic place and particular in distributing water in combination with small autoclaves, for transferring liquids and for the irrigation of gardens and allotments. The pumps should be installed in enclosed environment, or at least sheltered from inclement weather.



MODEL INSTRUCTION



PUMP CONFIGURATION

- Pump Body: Stainless steel
- Impeller: PPO
- Motor Shaft: 45# steel or stainless steel
- Mechanical Seal: Ceramic-graphite

PUMP FEATURES

- Equipped with high efficiency hydraulic components
- short self-priming time and strong self-priming ability
- Overload protection
- Low noise operation

APPLICATION LIMITS

- The PH value of the medium is between 6.5-8.5;
- The volume ratio of solid impurities in the medium is not more than 0.1%, and the particle diameter is not more than 0.2mm;
- Liquid temperature + 40 °C;
- Ambient temperature up to + 40 °C

TECHNICAL SPECIFICATIONS

Max.Power

Up to 1.5kW

Max.Flow

67 l/min

Max.Head

55 m

Suct.Max.

9 m

Size

1"×1"

INTRODUCING: SUITABLE FOR A VARIETY OF SCENARIOS



Tap water
pressurized



Well water
pressurization



Aquaculture
water

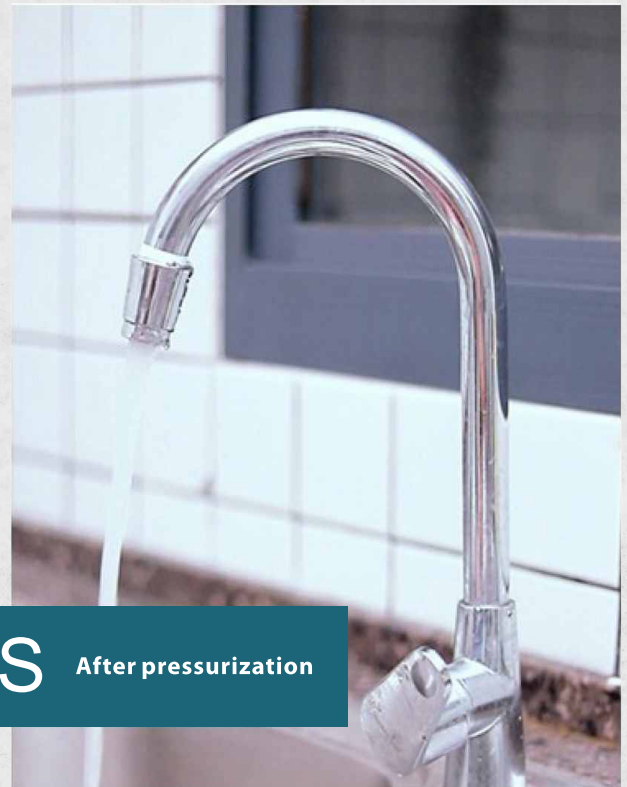


Irrigation
of farmland



Before pressurization

VS



After pressurization

INTRODUCTION: PUMP CONFIGURATION

Adopting excellent hydraulic design and reasonable structural equipment, the electric pump has higher efficiency, more stable and quieter operation than similar products;



Engineering plastic guide vane

High quality engineering plastics,
CFD hydraulic design, higher efficiency, lower noise



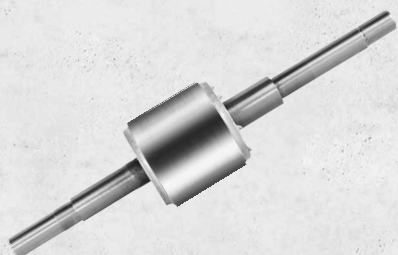
Mechanical Seal

Ceramic to graphite mechanical seal,
wear-resistant, anti-aging, and prevent leakage



304 Stainless Steel Shaft

Running smoothly, reducing wear and noise

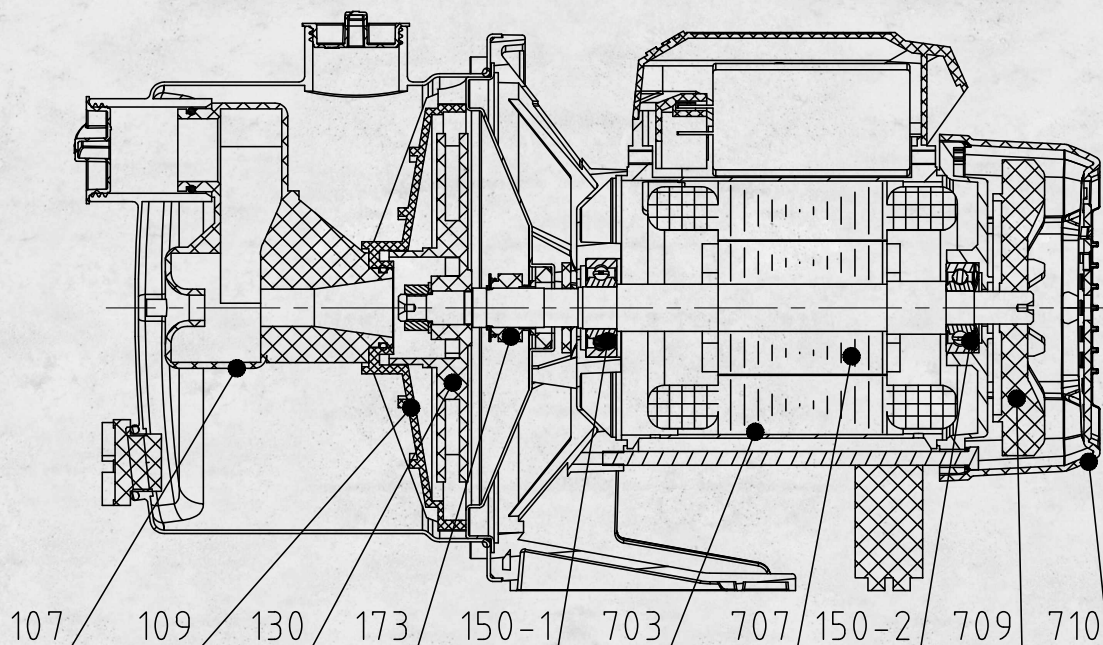


High quality bearing

Wear resistant, smooth running, no jamming

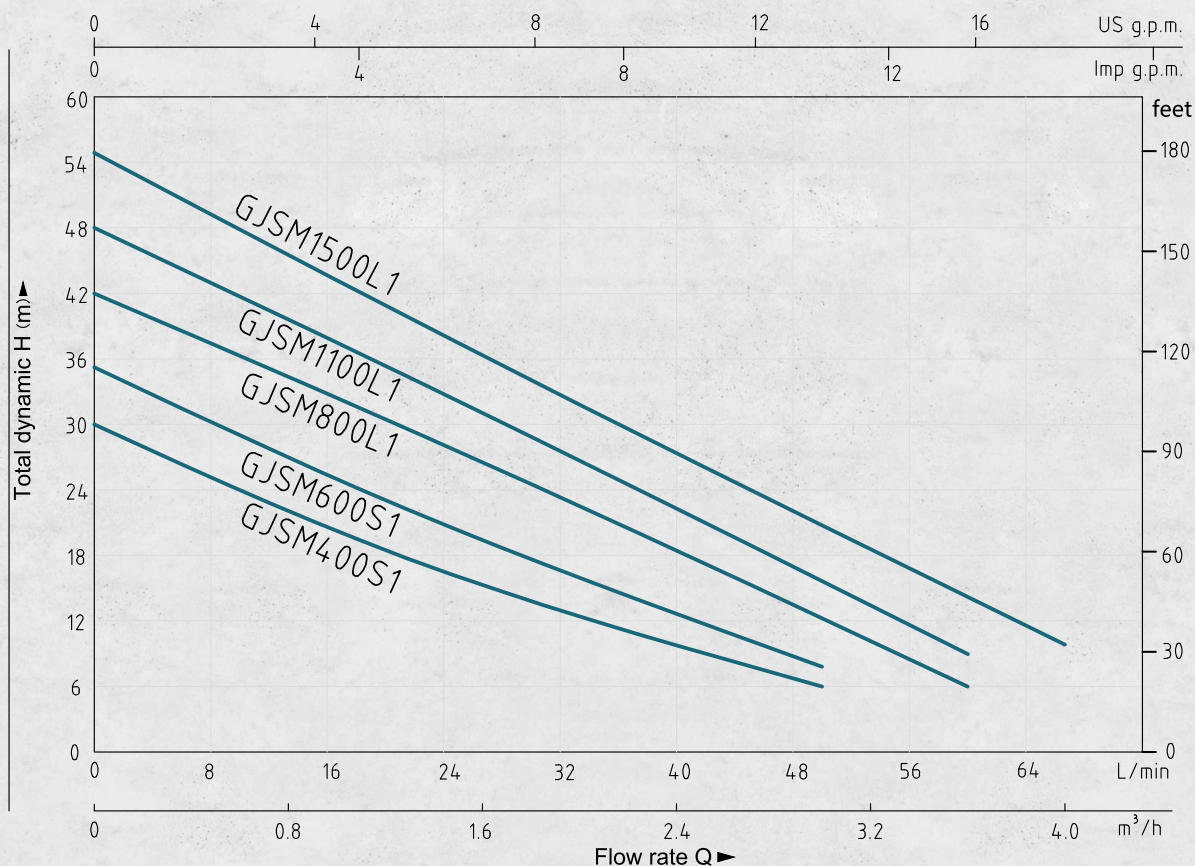


INTRODUCTION: PRODUCT PARAMETERS



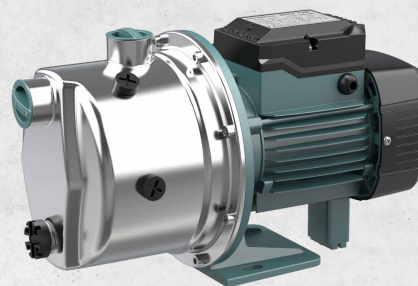
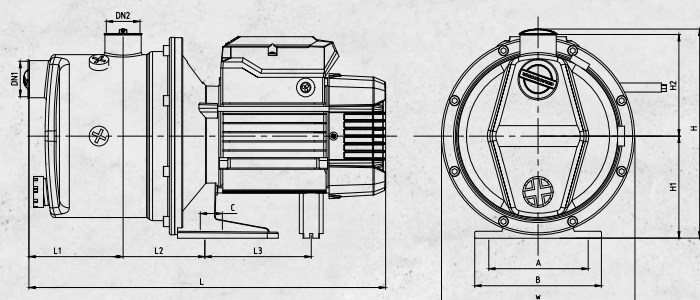
POS.	COMPONENT	CONSTRUCTION CHARACTERISTICS
107	EJECTOR	Imported engineering plastics
109	GUIDE VANE	Imported engineering plastics
130	IMPELLER	PPO
150	BEARING	304 stainless steel
173	MECHANICAL SEAL	Ceramic - graphite
703	STATOR	Stator core with winding
707	ROTOR	Cast aluminum rotor
709	FAN	Plastic
710	FAN COVER	Cast iron

INTRODUCTION: PERFORMANCE CHART

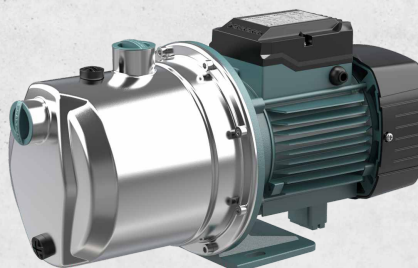
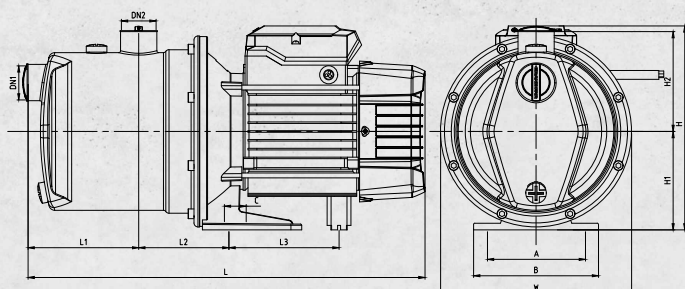
VERSION K1


Model	Power	Size	Suct.Max.	Current	Capacitor	Q(m³/h)	0	0.3	0.6	0.9	1.2	1.8	2.1	3	3.6	4
	kW	Inch	m	A	µF	Q(L/min)	0	5	10	15	20	30	35	50	60	67
GJSm400S1	0.4	1"×1"	9	2.3	10	H(m)	30	26.7	24	21.8	19	15.8	14.2	6	/	/
GJSm600S1	0.6	1"×1"	9	2.7	12		35	30.3	27.8	25.4	23.1	18.8	17	8	/	/
GJSm800L1	0.8	1"×1"	9	4	16		42	40	36.3	34	30.5	26.1	24.2	15.1	6	/
GJSm1100L1	1.1	1"×1"	9	5.1	20		48	43.1	40.2	37.2	35	30	27.2	15	9	/
GJSm1500L1	1.5	1"×1"	9	6.3	25		55	50.4	47.2	44	40.7	35.4	33.3	27.3	16	10

INTRODUCTION: PERFORMANCE CHART



Model	DN1	DN2	L	W	H	H1	H2	L1	L2	L3	A	B	C
GJSm400S1	1"	1"	359	195	206	100.5	100	94.8	81.7	107.7	95	127.5	21
GJSm600S1	1"	1"	359	195	206	100.5	100	94.8	81.7	107.7	95	127.5	21



Model	DN1	DN2	L	W	H	H1	H2	L1	L2	L3	A	B	C
GJSm800L1	1"	1"	405	195	208	100.5	102	113	92	118	95	127.5	21
GJSm1100L1	1"	1"	405	195	208	100.5	102	113	92	118	95	127.5	21
GJSm1500L1	1"	1"	405	195	208	100.5	102	113	92	118	95	127.5	21

PACKAGE SIZE



Model	N.W (kg)	G.W (kg)	L(cm)	W(cm)	H(cm)
GJSm400S1	5.8.	6.6	39	22	25
GJSm600S1	6.3	7	39	22	25
GJSm800L1	8.5	9.6	44.5	22	26.5
GJSm1100L1	9.6	10.3	44.5	22	26.5
GJSm1500L1	10.6	11.4	44.5	22	26.5



GRANDFAR

CONTINUE TO IMPROVE AND INNOVATE